

## **Pre Cast Plank Requisition 2023**

### **Cottonwood Lake Access Area**

Spink County, South Dakota, near the city of Redfield

**3' x 20' pre cast plank (31)**

Contact: Rhet Russell

(605) 882-5200

Delivered to site by September 29, 2023

### **Clear Lake Lakeside Use Area**

Marshall County, South Dakota, near the city of Lake City

**3' x 20' pre cast plank (66)**

Contact: Lori Skadsen

(605) 448-5701

Delivered to site by October 29, 2023

### **Lake Thompson Lakeside Use Area**

Kingsbury County, South Dakota, near the city of Lake Preston

**3' x 20' pre cast plank (29)**

Contact: David Shepherd

(605) 847-4893

Delivered to site by August 4, 2023

### **Lake Henry Lakeside Use Area**

Kingsbury County, South Dakota, near the city of Lake Preston

**3' x 20' pre cast plank (25)**

Contact: David Shepherd

(605) 847-4893

Delivered to site by August 4, 2023

**Lake Oliver Lakeside Use Area**

Deuel County, South Dakota, near the city of Clear Lake

**3' x 20' pre cast plank (28)**

Contact: Josh Cleveland

(605) 882-5200

Delivered to site by August 25, 2023

**Joe Creek Lakeside Use Area**

Hughes County, South Dakota, near the city of Pierre

**3' x 20' pre cast plank (33)**

Contact: Ryan Raynor

(605) 773-2885

Delivered to site by September 15, 2023

**Oahe Downstream Recreation Area**

Stanley County, South Dakota, near the city of Ft. Pierre

**3' x 20' pre cast plank (10)**

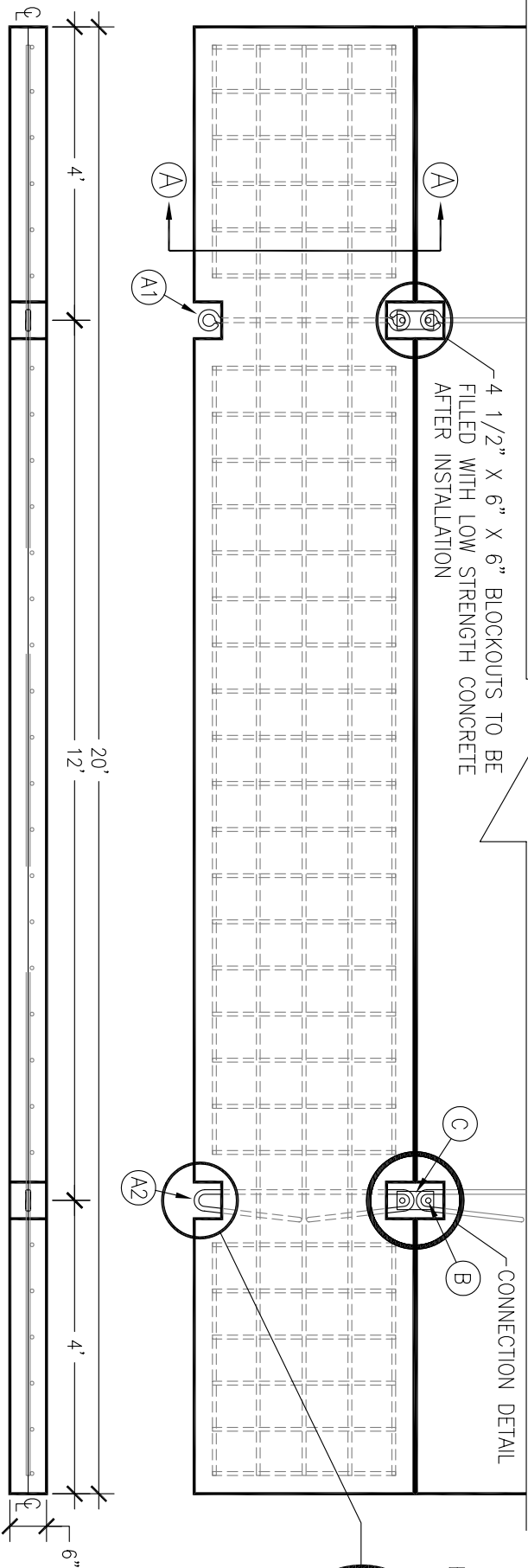
Contact: Pat Buscher

(605) 223-7722

Delivered to site by September 15, 2023

**3' x 20' pre cast plank Total 222**

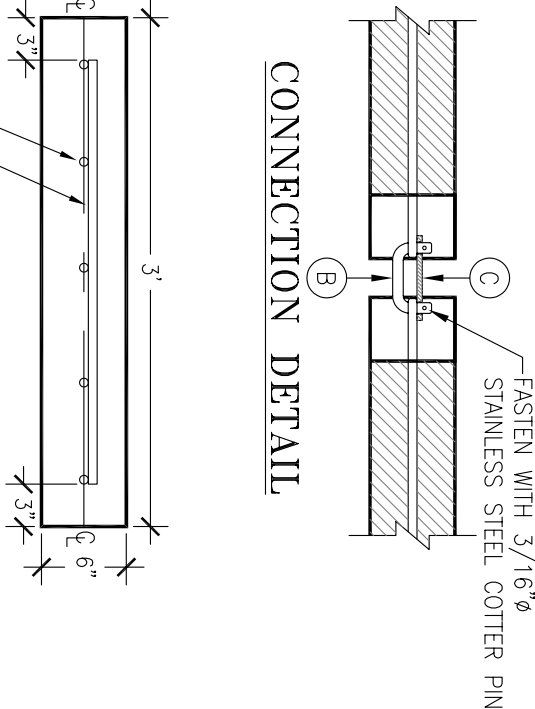
EXAMPLE OF PLANK AND CONNECTIONS FURNISHED BY GAME, FISH AND PARKS. LOW STRENGTH CONCRETE SHALL BE FURNISHED BY THE CONTRACTOR.



PLAN & ELEVATION

BLOCKOUT DETAIL

CONNECTION DETAIL



NO. 5 REBAR, 2'-6" LENGTH, EQUALLY SPACED (QTY. 30)  
NO. 5 REBAR, 19'-6" LENGTH, EQUALLY SPACED (QTY. 5)  
NOTE: MAINTAIN 3" CLEAR COVER AS DEPICTED

SECTION A-A

TECHNICAL SPECIFICATIONS FOR BOAT RAMP PLANKING

I. MATERIALS AND CONSTRUCTION

The boat ramp planks may be pre cast. Concrete will be in conformance with Section 460 of the South Dakota Standard Specifications for Roads and Bridges (2004 Edition).

- Pre cast boat ramp plank shall conform to the following standards:
  - Design strength of Concrete 4500 P.S.I. with 5% to 7% air content Strength of Moving Slabs 4500 P.S.I.
  - Reinforcement shall be placed in accordance with current ACI 318 requirements. Chairs shall be used to assure proper clear cover for reinforcement.
  - Before the concrete has attained its initial set, the top surface of the pre cast plank shall be given a longitudinal finish by brooming with a stiff bristle broom prior to the metal-time finish. The device used to obtain the metal-time finish shall be equipped with four inch steel tines approximately .032-inch by .083-inch (Gross Section) arranged so as to obtain randomized grooves approximately 5/16 inch deep with an effective spacing of one (1) inch. Other texturing equipment may be approved for use provided it will produce an equivalent texture. Core shall be taken to avoid overlaps in the metal tinning operation.

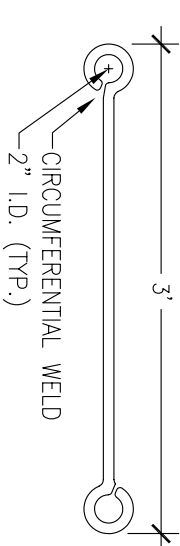
II. SUBMITTALS OF TEST CYLINDERS

- Three test cylinders shall be made for each 25 yards or fraction thereof of all field placed concrete. Of the three cylinders taken, one will be tested for strength at seven days and one will be tested for strength at 28 days. Results of test cylinders tested at either seven or 28 days shall not be less than strength requirements of respective concrete class. The third test cylinder shall be used as a back-up and shall not be tested unless strength of first two cylinders do not meet the strength requirements specified herein.
- Where average of two test cylinders tested does not meet strength requirements per preceding paragraph, the owner reserves the right to order a change in proportions on cement content at no increase in contract cost. Concrete not attaining the specified strength will be rejected.
- Contractor shall make samples, provide storage & protection at the job sites for samples. The contractor shall provide sufficient number of molds for making required test cylinders. Test cylinders shall be marked with oil point indicating date, location of the pour and delivered by the contractor to the testing firm which shall be selected by the owner. Cost of the test will be borne by the State. Test reports will be mailed to the contractor and owner.
- A concrete mix design shall be submitted by the supplier to the owner seven days prior to the fabrication of the plank.

SUBMIT TO: Department of Game, Fish and Parks

Engineering Section  
523 E. Capitol Avenue  
Pierre, S.D. 57501  
(605) 773-6082

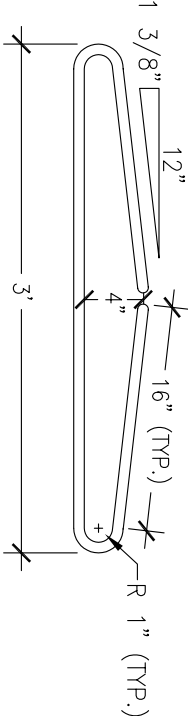
3' X 20' PRE CAST CONCRETE BOAT RAMP PLANK



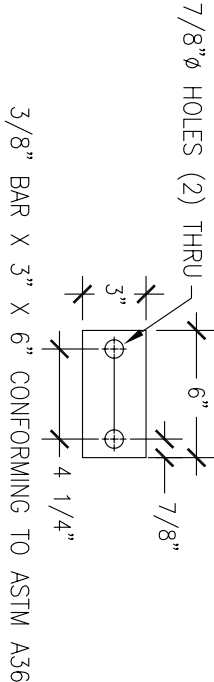
1/4" Holes (2) DRILL THROUGH FOR 3/16" STAINLESS STEEL COTTER PINS

3/4" STEEL ROD CONFORMING TO ASTM A36

DETAIL B



DETAIL A1 & A2



DETAIL C