

# SOUTH DAKOTA DEPARTMENT OF THE MILITARY



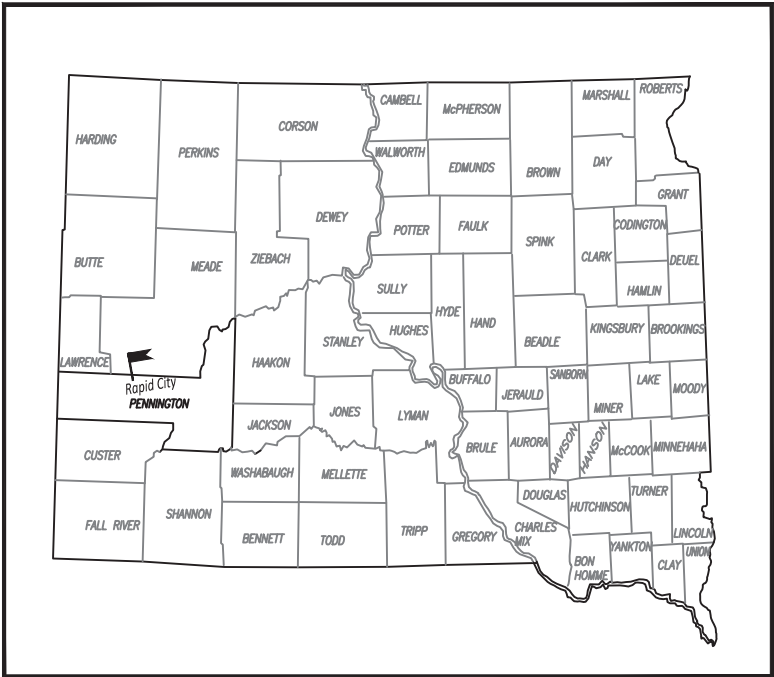
## FOUNDATION REPAIR ON RUSSELL HOUSE #2 WEST CAMP RAPID

CFMO# 467063  
RAPID CITY, SD  
AUGUST 2023

**NOTICE TO CONTRACTOR**  
THE CONSTRUCTION CONTRACTOR AGREES THAT IN ACCORDANCE WITH GENERALLY ACCEPTED CONSTRUCTION PRACTICES, HE/SHE WILL BE REQUESTED TO ASSUME SOLE AND COMPLETE RESPONSIBILITY FOR JOB SITE CONDITIONS DURING THE COURSE OF CONSTRUCTION OF THE PROJECT, INCLUDING THE SAFETY OF ALL PERSONS AND PROPERTY. THIS REQUIREMENT SHALL APPLY CONTINUOUSLY AND NOT BE LIMITED TO NORMAL WORKING HOURS. THE CONSTRUCTION CONTRACTOR FURTHER AGREES TO DEFEND, INDEMNIFY AND HOLD THE DESIGN PROFESSIONAL HARMLESS FROM ANY AND ALL LIABILITY, REAL OR ALLEGED, IN CONNECTION WITH THE PERFORMANCE OF WORK ON THIS PROJECT, EXCEPTING LIABILITY ARISING FROM THE SOLE NEGLIGENCE OF THE DESIGN ENGINEER.

**UNAUTHORIZED CHANGES**  
THE ENGINEER PREPARING THESE PLANS WILL NOT BE RESPONSIBLE FOR, OR LIABLE FOR, UNAUTHORIZED CHANGES TO OR USES OF THESE PLANS. ALL CHANGES TO THE PLANS MUST BE IN WRITING AND MUST BE APPROVED BY THE PREPARER OF THESE PLANS. THE ENGINEER SIGNING THESE PLANS IS RESPONSIBLE FOR ASSURING THE ACCURACY AND ACCEPTABILITY OF THE DESIGN HERON.

STATE REFERENCE MAP



CITY MAP



### SHEET INDEX

COVER SHEET, NOTES & GENERAL INFORMATION

- G-101-----COVER SHEET
- A-001-----FOUNDATION PLAN
- A-002-----MAIN FLOOR PLAN
- A-101-----WEST ELEVATION & DETAILS
- A-102-----EAST ELEVATION & DETAILS
- A-201-----DETAILS
- A-202-----DETAILS

### REVISIONS

ZONE	LTR		DATE	APPROVED



SOUTH DAKOTA DEPARTMENT OF THE MILITARY

SPARNG CONSTRUCTION & FACILITY  
MANAGEMENT OFFICE

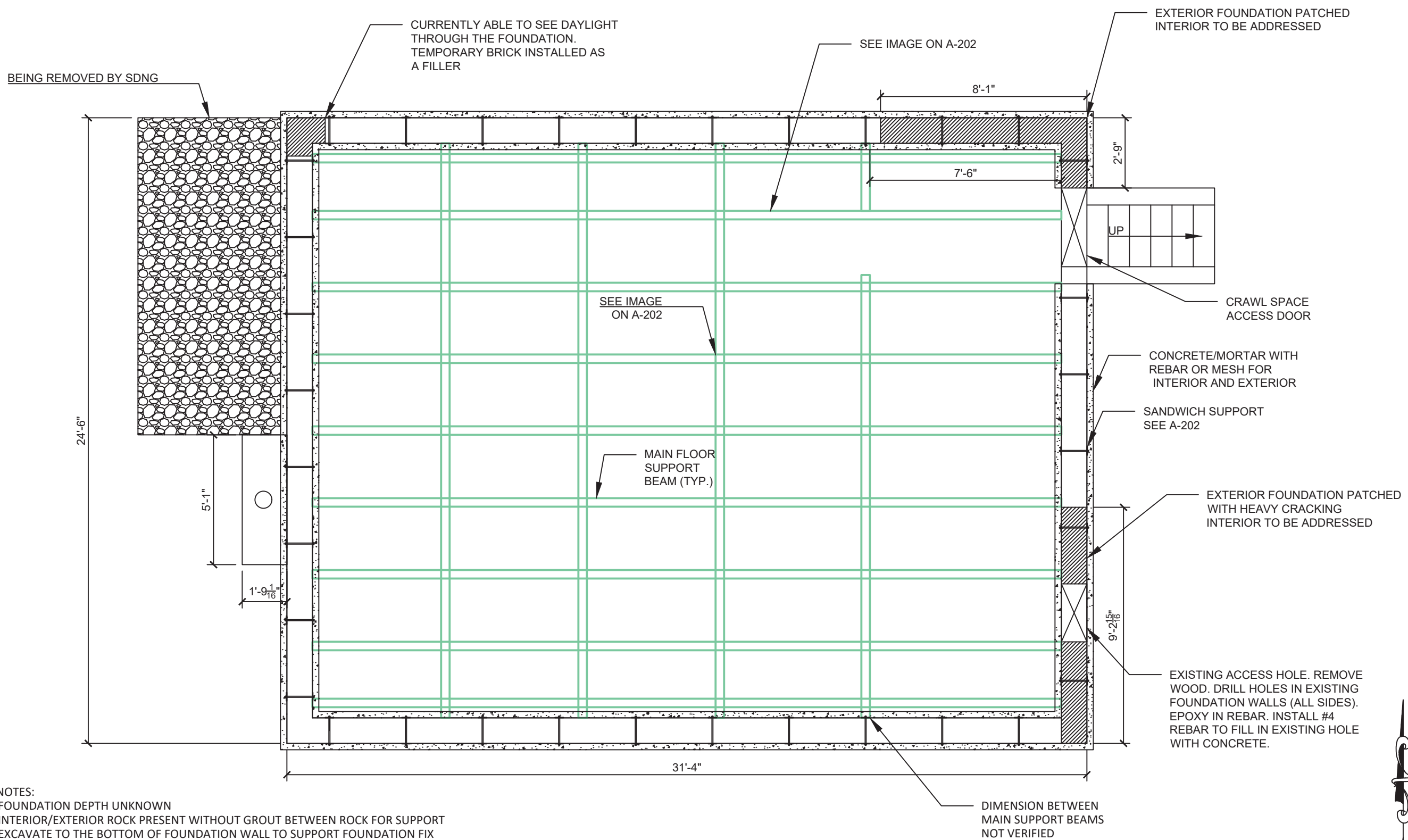


2823 WEST MAIN STREET, RAPID CITY, SD 57702 ♦ (605) 737-6637 FAX (605) 737-6204

FOUNDATION REPAIR ON RUSSELL HOUSE #2  
WEST CAMP RAPID  
RAPID CITY, SD  
CFMO# 467063

COVER SHEET

SUBMITTAL:  
100%  
DATE:  
AUGUST 2023  
SHEET No:  
G-101



- PLAN NOTES:
1. FOUNDATION DEPTH UNKNOWN
  2. INTERIOR/EXTERIOR ROCK PRESENT WITHOUT GROUT BETWEEN ROCK FOR SUPPORT
  3. EXCAVATE TO THE BOTTOM OF FOUNDATION WALL TO SUPPORT FOUNDATION FIX
  4. SANDWICH EXISTING ROCK FOUNDATION WITH  $\frac{1}{4}$ " (MIN.) PLATE BY BOLTS THROUGH THE ROCK FOUNDATION.
  5. REINFORCE STONE FOUNDATION WITH CONCRETE/MORTAR ON ALL SIDE
  6. CONTRACTOR SHALL GRADE AND BACKFILL TOPSOIL TO ACHIEVE POSITIVE SLOPE AWAY FROM THE HOUSE



SCALE:  $\frac{1}{4}$ "=1'



SOUTH DAKOTA DEPARTMENT OF THE MILITARY

SDARNG CONSTRUCTION & FACILITY  
MANAGEMENT OFFICE



2823 WEST MAIN STREET, RAPID CITY, SD 57702 • (605) 737-6637 FAX (605) 737-6204

FOUNDATION REPAIR ON RUSSELL HOUSE #2

WEST CAMP RAPID

RAPID CITY, SD

CFMO# 467063

FOUNDATION PLAN

SUBMITTAL:

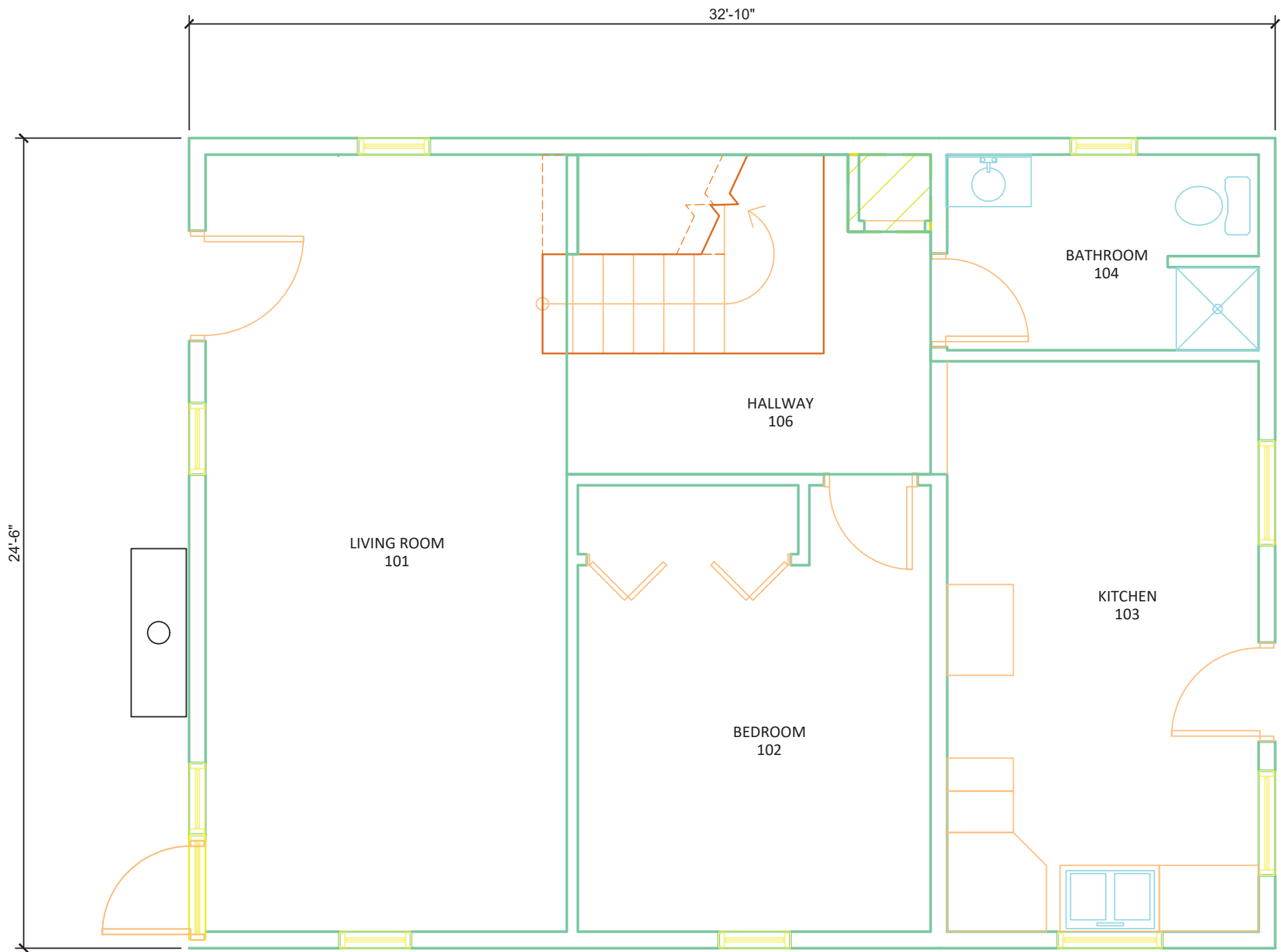
100%

DATE:

AUGUST 2023

SHEET No:

A-001



SCALE: 1/4"=1'

**FOUNDATION REPAIR ON RUSSELL HOUSE #2**  
**WEST CAMP RAPID**  
 RAPID CITY, SD  
 CFMO# 467063

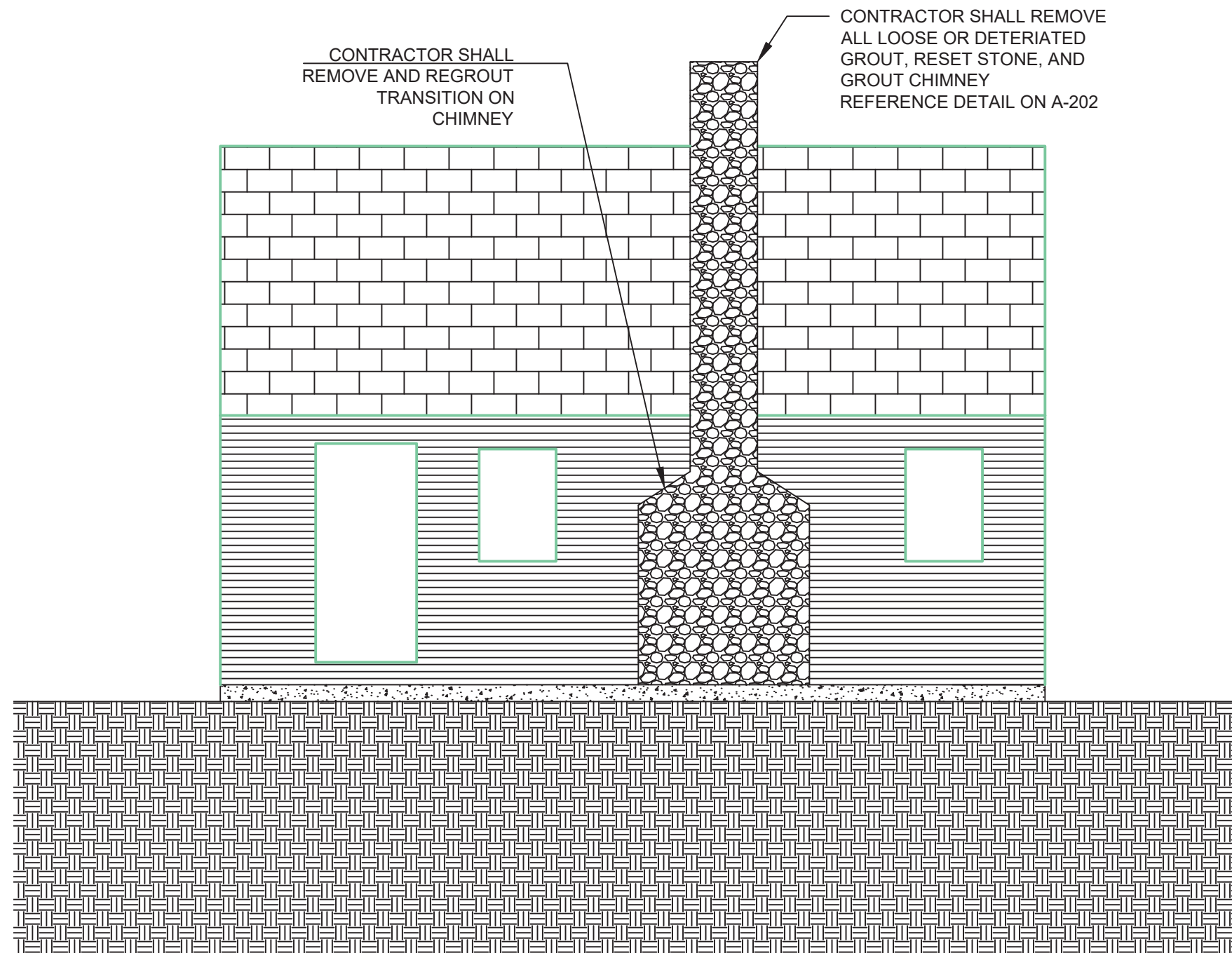
MAIN  
FLOOR PLAN

SUBMITTAL:  
100%

DATE:  
AUGUST 2023

SHEET No:  
A-002





CHIMNEY DETAIL



SOUTH DAKOTA DEPARTMENT OF THE MILITARY

SDARM CONSTRUCTION & FACILITY  
MANAGEMENT OFFICE



2823 WEST MAIN STREET, RAPID CITY, SD 57702 • (605) 737-6637 FAX (605) 737-6204

FOUNDATION REPAIR ON RUSSELL HOUSE #2

WEST CAMP RAPID

RAPID CITY, SD

CFMO# 467063

WEST ELEVATION & DETAILS

SUBMITTAL:

100%

DATE:

AUGUST 2023

SHEET No:

A-101

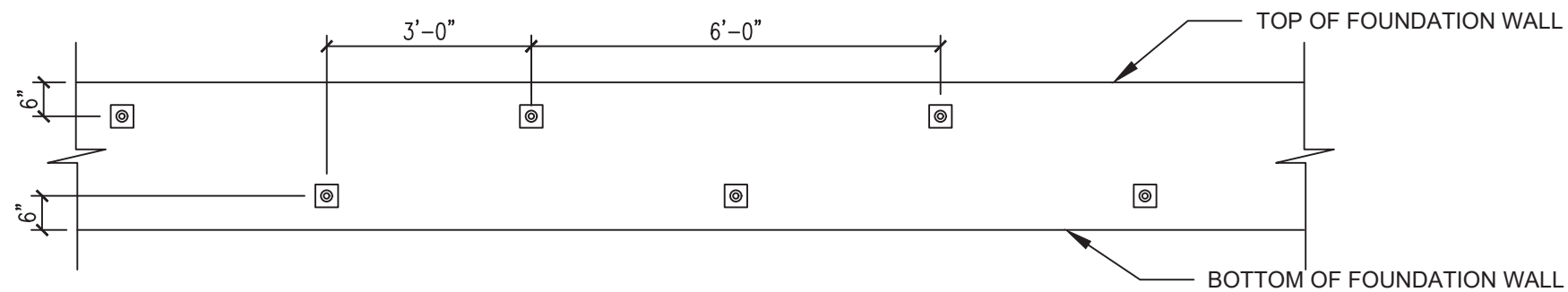
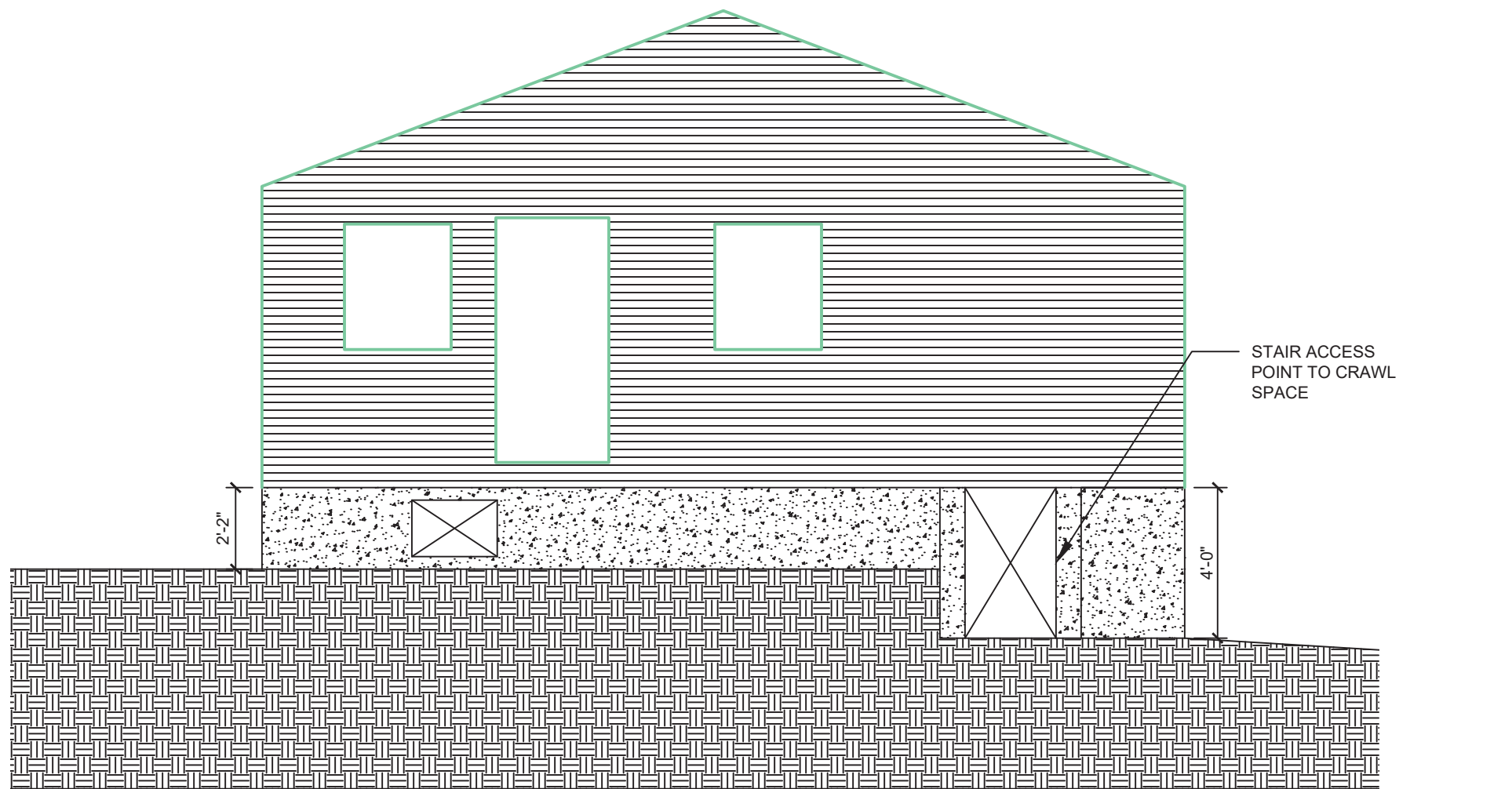


PLATE LOCATION DETAILS  
(TYP. EACH ELEVATION)



SCALE: 1/4"=1'

 SOUTH DAKOTA DEPARTMENT OF THE MILITARY SDARNG CONSTRUCTION & FACILITY MANAGEMENT OFFICE 	FOUNDATION REPAIR ON RUSSELL HOUSE #2 WEST CAMP RAPID RAPID CITY, SD CFMO# 467063	EAST ELEVATION & DETAILS	SUBMITTAL: 100%
			DATE: AUGUST 2023
			SHEET No: A-102

2823 WEST MAIN STREET, RAPID CITY, SD 57702 • (605) 737-6637 FAX (605) 737-6204





NORTH ELEVATION



SOUTH ELEVATION



WEST ELEVATION



EAST ELEVATION



SOUTH DAKOTA DEPARTMENT OF THE MILITARY

SDARNG CONSTRUCTION & FACILITY  
MANAGEMENT OFFICE



2823 WEST MAIN STREET, RAPID CITY, SD 57702 • (605) 737-6637 FAX (605) 737-6204

FOUNDATION REPAIR ON RUSSELL HOUSE #2

WEST CAMP RAPID

RAPID CITY, SD

CFMO# 467063

DETAILS

SUBMITTAL:  
100%

DATE:  
AUGUST 2023

SHEET No:  
A-201

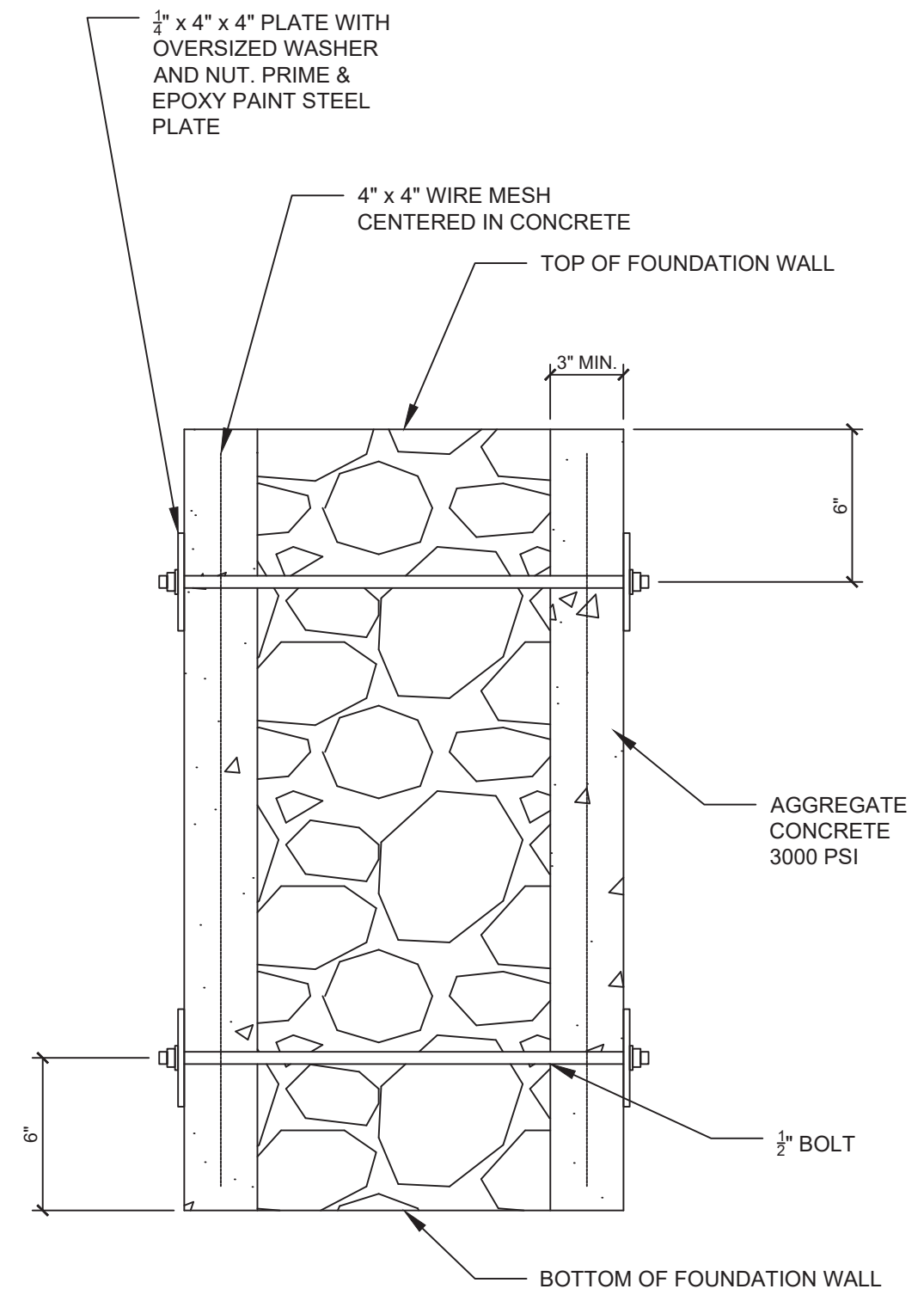


ON BOTH LEFT AND RIGHT SIDE OF TEMPORARY BRICKS. ADD 4X4 COLUMN TO STRUCTURALLY SUPPORT THE MAIN FLOOR SUPPORT BEAM. 12" X 3'-0" DEEP CONCRETE FOOTING. REMOVE WEDGE BOARD AND TEMPORARY BRICK SUPPORT

REPLACE CUT FLOOR BEAM OR ADD MATCHING WOOD BOARD TO THE STRUCTURAL SUPPORT MEMBERS 1'-0" PAST BOTH SIDES OF THE OPENING AND ON EACH SIDE OF THE CUT BEAM TO RESTORE STRUCTURAL INTEGRITY. FASTEN WITH STRUCTURAL WOOD BOLTS (MIN OF 2 -  $\frac{3}{8}$ " DIA.) ON EACH SIDE OF THE OPENING.



SUPPORT DETAILS



SANDWICH DETAIL



SOUTH DAKOTA DEPARTMENT OF THE MILITARY

SDARM CONSTRUCTION & FACILITY  
MANAGEMENT OFFICE



2823 WEST MAIN STREET, RAPID CITY, SD 57702 • (605) 737-6637 FAX (605) 737-6204

FOUNDATION REPAIR ON RUSSELL HOUSE #2

WEST CAMP RAPID

RAPID CITY, SD

CFMO# 467063

DETAILS

SUBMITTAL:

100%

DATE:

AUGUST 2023

SHEET No:

A-202